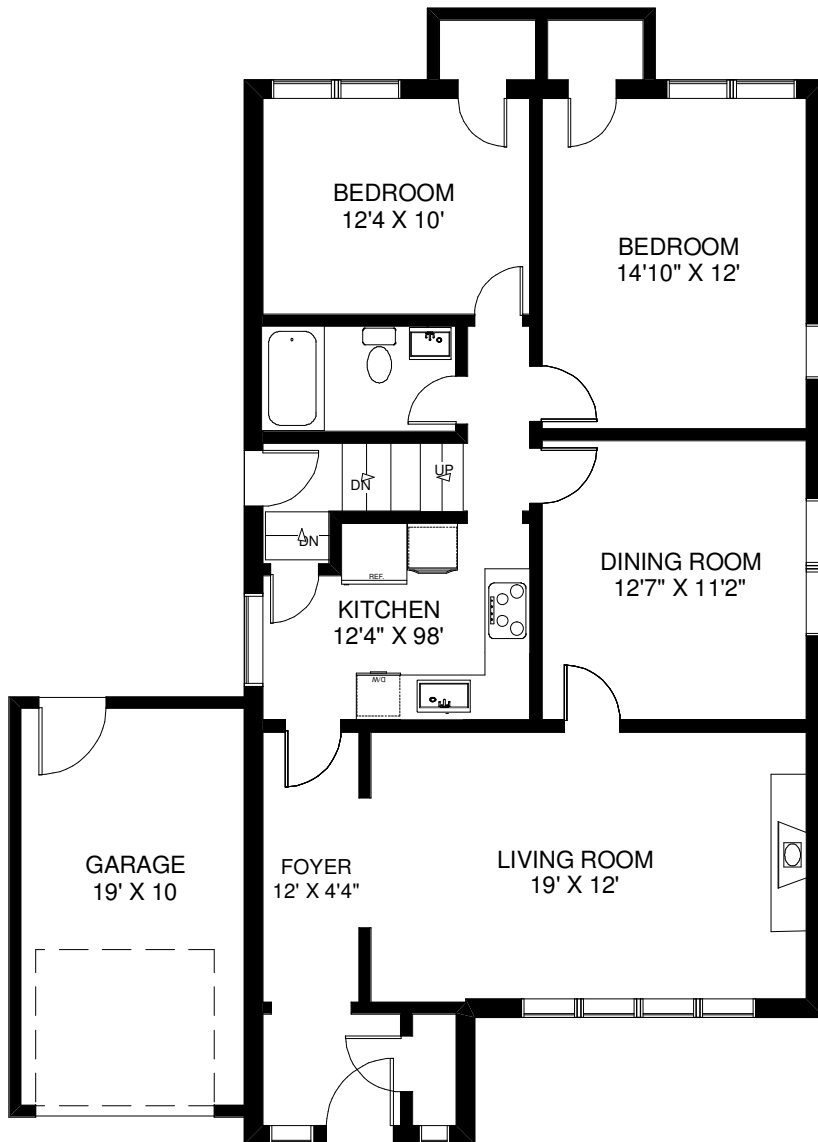
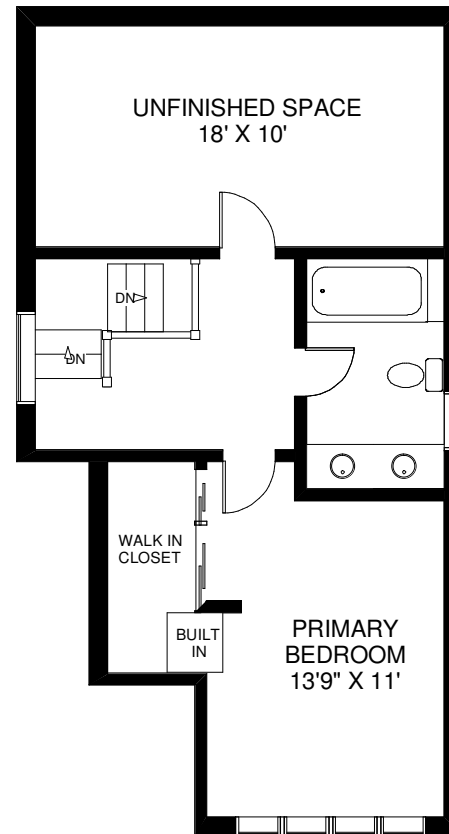


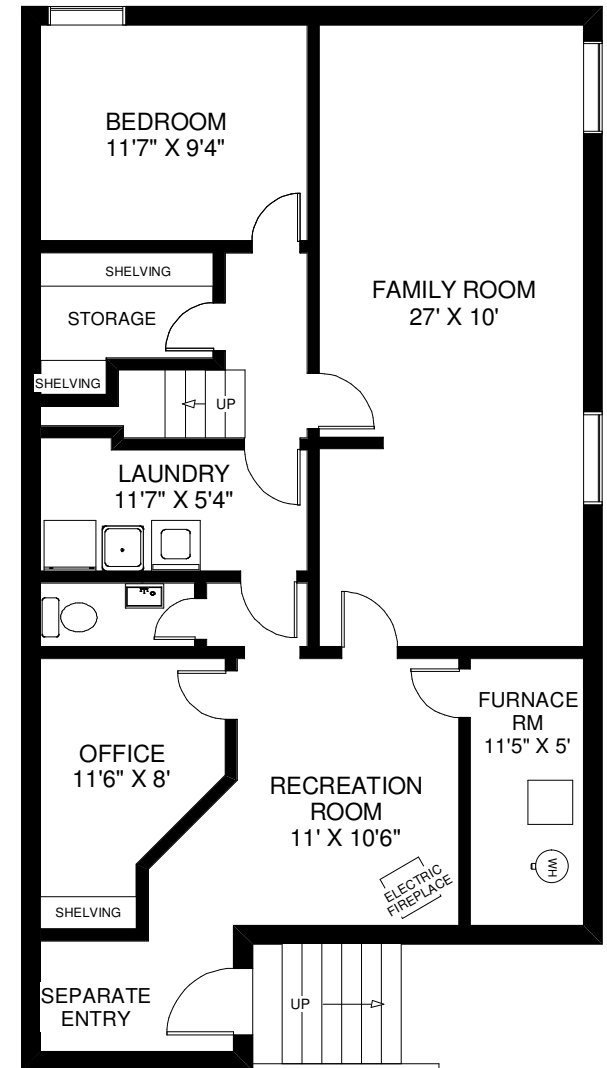
49 MEADOWVALE DRIVE



MAIN FLOOR
APPROXIMATELY 1,180 SQ FT



SECOND FLOOR
APPROXIMATELY 450 SQ FT
PLUS
APPROXIMATELY 180 SQ FT OF
UNFINISHED SPACE



LOWER FLOOR
APPROXIMATELY 1,180 SQ FT

Note: Measurements & Calculations are approximate. Provided as a guideline only.